
The University of North Carolina
Transfer Student Report
2013



The University of North Carolina
General Administration

August 2014

Table of Contents

Executive Summary.....	1
Introduction.....	2
UNC Transfer Student Enrollment Trends.....	3
Figure 1: <i>UNC Transfer Student Enrollment Trends - By Origin, Fall 2008 - Fall 2013</i>	3
Figure 2: <i>UNC Transfer Student Enrollment Trends - NCCCS Categories, Fall 2008 - Fall 2013</i>	4
Demographics of UNC Transfer Students	5
Figure 3: <i>Demographics of UNC Transfer Student, Fall 2008 & Fall 2013</i>	5
Entering Class Level.....	6
Figure 4: <i>UNC Transfer Student Entering Class Level, Fall 2013</i>	6
Graduation & Progress Rates.....	7
Figure 5: <i>UNC Transfer Student Graduation Rates - Juniors, 2008 & 2009 Cohorts</i>	7
Transfer Student Declared Majors.....	8
Table 1: <i>Transfer Students Declared Majors (Percentage), 2013 Cohort</i>	9
Other Transfer Initiatives Within UNC.....	10
Comprehensive Articulation Agreement	10
Reverse Transfer.....	10
Lateral Agreements and Partnerships	10
Appendix A - Definitions of Terms.....	11
Appendix B - UNC Transfer Student Enrollment Trends, Fall 2003 - Fall 2013	12
Appendix C - UNC Transfer Student Enrollment by Campus, Fall 2013	13
Appendix D - Campus Transfer Student Enrollment Trends, Fall 2003 - Fall 2013.....	14
Appendix E - UNC Transfer Student Entering Class Level, Fall 2013.....	30
Appendix F - Transfer Student Graduation Rates	31

Executive Summary

Over the past decade, the number of students matriculating to UNC as transfer students has increased by over a third. These students originate from a range of other institutions, coming to UNC from the North Carolina Community College System (NCCCS), NC private institutions, other UNC institutions, and institutions in other states. Due to this population's critical importance to the system's five-year strategic plan, this report provides context, data, and analysis on these students.

Key findings in this year's report include:

- The transfer student population is a large and growing segment of the student body.
 - The fall 2013 undergraduate student body consisted of over **47,000** transfer students. System-wide approximately **28%** of all undergraduates, or one in four, entered a UNC institution as a transfer student.
 - The number of undergraduate transfer students entering UNC increased by **15%** from fall 2008 to fall 2013, from **13,024** to **14,954**.
 - From fall 2012 to fall 2013, the number of new undergraduate transfer students entering UNC increased by **205** students, growing from **14,749** to **14,954**.
- The majority of transfers come to UNC campuses from NCCCS institutions, with these students representing the fastest growing segment of the transfer population.
 - In fall 2013, **56% (8,383)** of all new transfer students came from NCCCS.
- The demographic details of the transfer student population mirrors that of the general UNC student population, with slightly more Pell grant recipients.
- Transfer students graduate at lower rates when compared to native UNC juniors.
 - Transfer students entering UNC as juniors in 2009 had an overall four-year graduation rate of **70%** compared to an **84%** graduation rate non-transfer juniors.
 - NCCCS transfers with an AA/AS degree and UNC-to-UNC transfers had the highest four-year graduation rate, **75%**.
- Transfer students who declare majors upon entering the UNC system have a higher graduation rate than undecided transfer students. Using comparable sub-populations from the 2009 cohort, students declaring a major had a **72%** graduation rate compared to **64%** for those entering undeclared.

Introduction

Over the past several decades students have become more mobile with the number of students transferring into North Carolina's public four-year institutions increasing dramatically. These students come from the North Carolina Community College System (NCCCS), NC private institutions, other University of North Carolina (UNC) institutions, and institutions in other states. In order to better serve transfer students, UNC General Administration (UNC-GA) works closely with NCCCS and other partners to ensure continued improvement in the policies and services that promote seamless, inter-institutional educational experiences and foster student success.

The Transfer Student Report presented to the UNC Board of Governors (BoG) provides context, data, and analysis of transfer student success in the UNC system.¹

This report focuses on:

- Volume and distribution of transfer students
- Student demographics
- Intended majors
- Graduation and progress rates

This report also provides details on three major transfer student initiatives:

1. In February 2014, UNC and NCCCS approved an updated Comprehensive Articulation Agreement (CAA) that strengthens curricular alignment across the state's public postsecondary sectors.
2. UNC-GA is also collaborating with NCCCS on an initiative supported by USA Funds that enables "reverse transfer." This grant aids in developing processes for awarding associate degrees to students who complete their community college requirements while pursuing their baccalaureate degree at a UNC institution.
3. As of this writing, the North Carolina legislature has pending legislation requiring UNC-GA and NCCCS to study the various cross-sector agreements and partnerships that exist at the institutional and programmatic levels. In anticipation of this request, UNC-GA has begun data collection for this project.

¹ Definitions of terms used throughout the report are found in Appendix A.

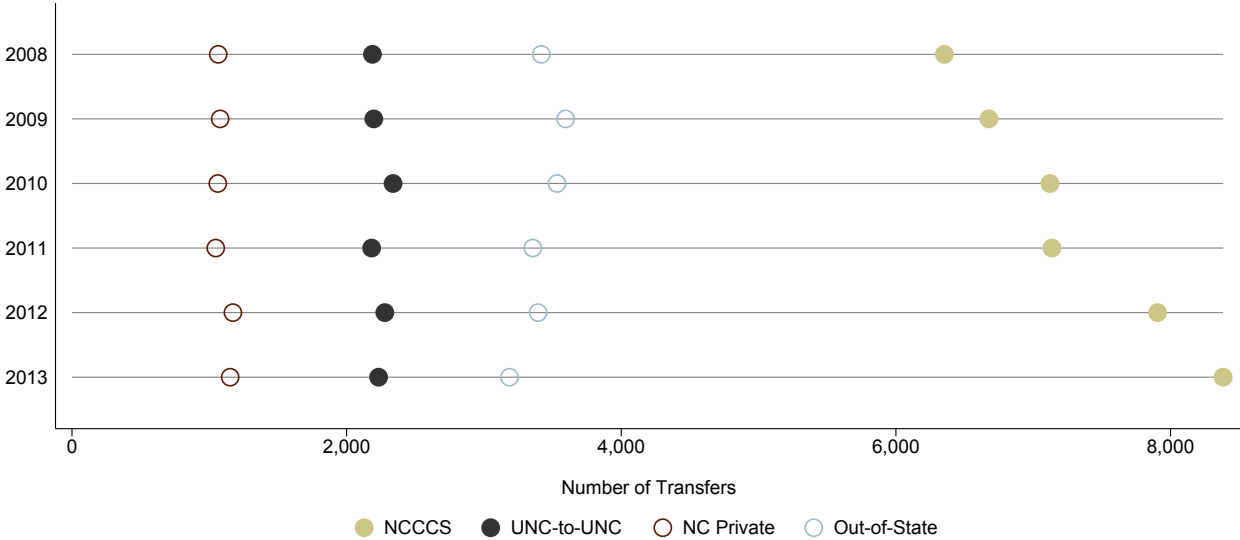
UNC Transfer Student Enrollment Trends

UNC transfer students continue to comprise a large segment of the overall UNC student body. In fall 2013, over 47,000 students enrolled in UNC’s campuses had begun their UNC career through transferring from another institution, a number constituting approximately 28% of the current UNC undergraduate population. This student population is increasing, with newly matriculating transfers growing by 34% over the past decade and by 205 students in the last year alone.

Over half of all newly enrolled transfer students (56%) come to UNC campuses from the NCCCS. Over the last decade, enrollment of NCCCS transfers increased from 6,353 in fall 2008 to 8,383 in fall 2013 (+32%). Driving this growth is a significant increase in NCCCS transfers with an Associate of Arts or Associate of Science (AA/AS) degree, a sub-population that grew by over 59% in the last six years. During this same period, non-NCCCS transfers decreased, moving from 6,671 in fall 2008 to 6,571 in fall 2013 (-1%). Out-of-state transfer students account for 21% of the fall 2013 transfer students, over half of whom are North Carolinians.²

Figure 1 shows transfer student enrollment trends by origin of transfer (NCCCS, UNC campus, NC Private institution, or Out-of-State) across time.³

Figure 1: UNC Transfer Student Enrollment Trends - By Origin, Fall 2008 - Fall 2013

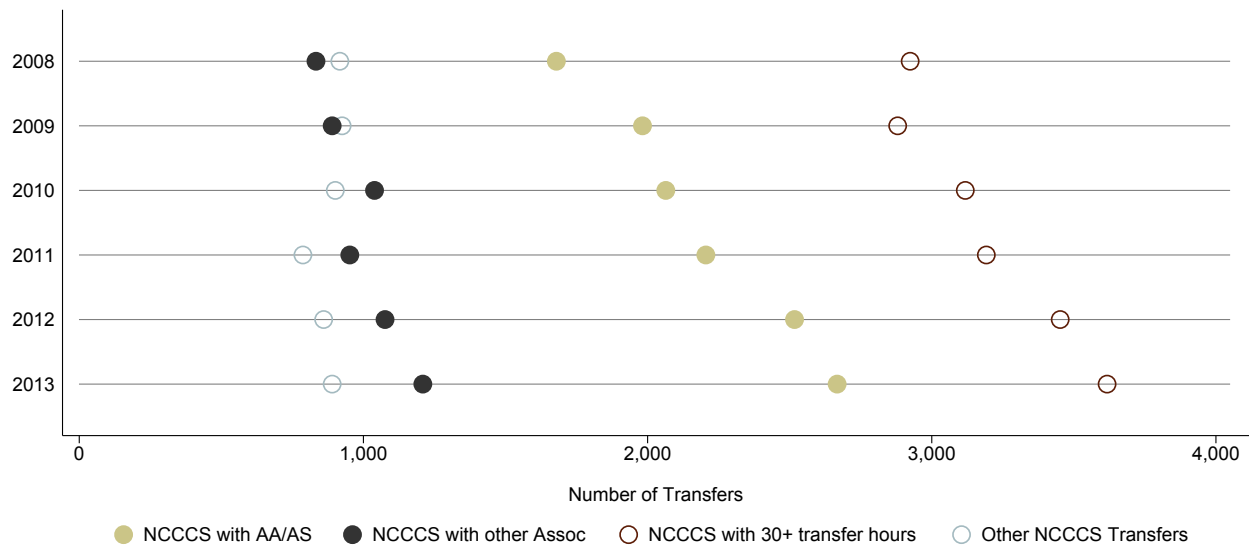


Source: UNC-GA IRA/CCD.ZE002

2 55% of out-of-state transfers claim North Carolina residency in their admissions documentations.
 3 Annual totals of transfer students across all transfer types can be found in Appendix B, and fall 2013 transfer student enrollment data by campus can be found in Appendix C.

There are several substantive differences among transfer students from NCCCS, differences that have implications upon enrolling at UNC institutions and the subsequent pathways to degree completion. The categories used throughout this report are NCCCS transfers with an AA/AS degree, those with a non-AA/AS associate degree, transfers with 30 or more hours and no degree, and students who transfer with fewer than 30 hours of college credit (Other NCCCS Transfers). As shown in Figure 2, over the past six years, all NCCCS categories increased except “Other NCCCS Transfers.”⁴

Figure 2: *UNC Transfer Student Enrollment Trends - NCCCS Categories, Fall 2008 - Fall 2013*



Source: UNC-GA IRA/CCD.ZE002

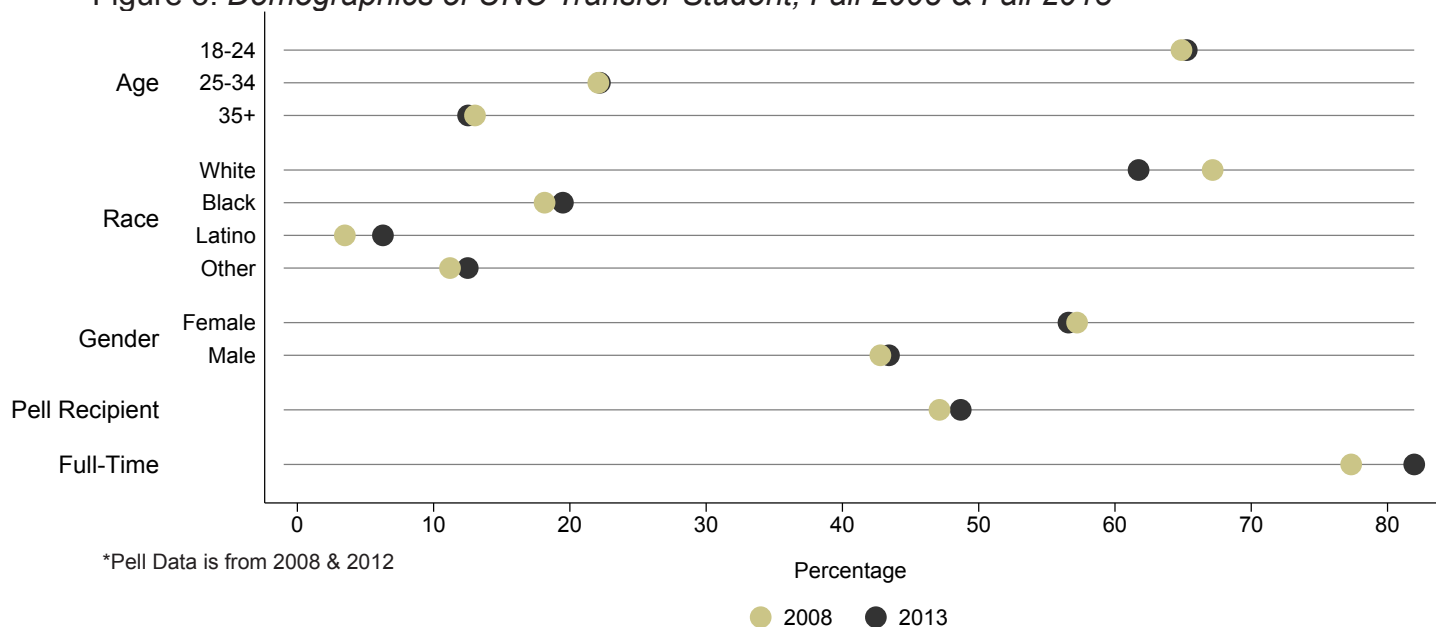
⁴ Campus-specific data for all transfer students from fall 2003 through fall 2013 is provided in Appendix D.

Demographics of UNC Transfer Students

Figure 3 shows the demographic composition of the UNC transfer student body. Highlights in comparison to the overall UNC student population include:

- The majority of transfer students (65%) are under the age of 25, a relationship that remained stable over the past six years. In comparison, 84% of the total UNC undergraduate population is under the age of 25.
- The racial and ethnic composition of the transfer student population mirrors that of the total UNC undergraduate population, with the majority being white, followed by black and Latino.
- The majority of transfer students are female (57%), a figure comparable to the gender composition of the broader UNC undergraduate population (56%).
- In fall 2013, a larger proportion of transfer students were Pell grant recipients (49%), a number that has increased 1.6 percentage points over the past six years. Across the entire UNC undergraduate population, 36% received a Pell grant in fall 2012.
- In fall 2013, over 80% of new transfer students began their studies as full-time students.

Figure 3: *Demographics of UNC Transfer Student, Fall 2008 & Fall 2013*



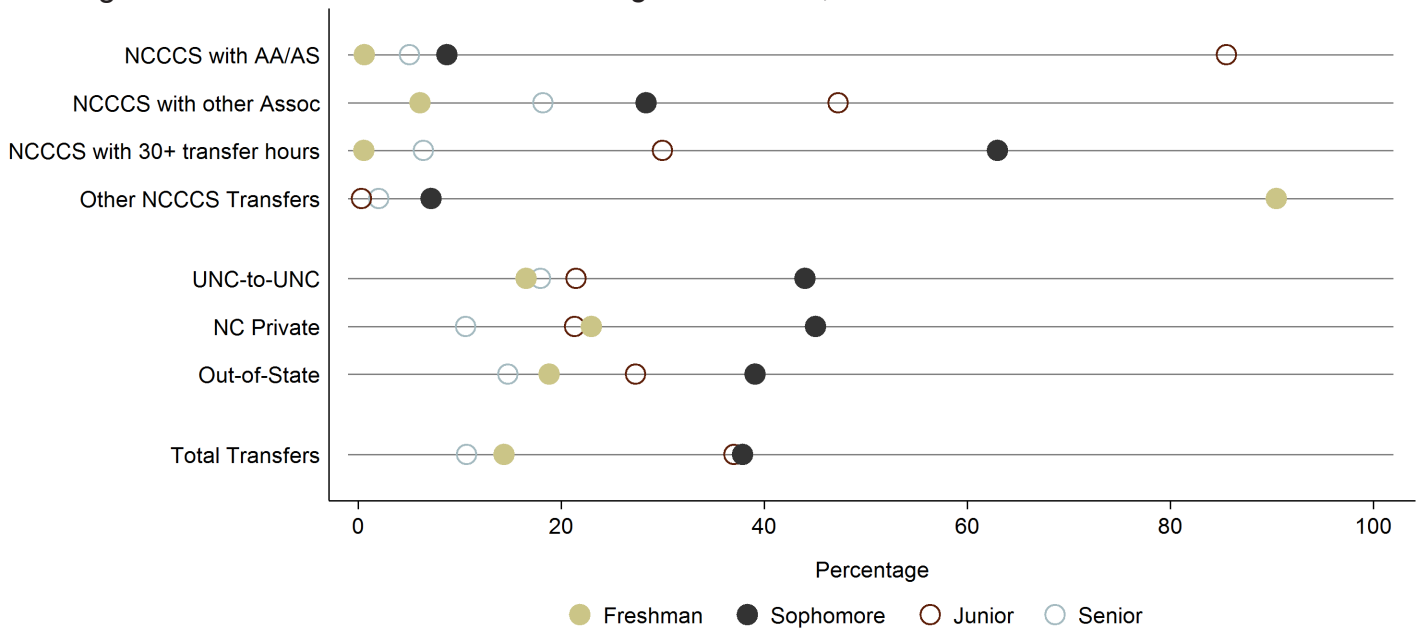
Source: UNC-GA IRA/CCD.ZE002

Entering Class Level

Admissions officers at UNC institutions review transfer applicant transcripts and admit students at different class levels: freshman, sophomore, junior, and senior. This process occurs at the institutional level with many decisions left to individual campuses. For example, a campus may choose not to award UNC credit for a NCCCS class in which a student received below a “C.”

Figure 4 displays the distribution of new fall 2013 transfer students by entering class level.⁵ This composition has stayed relatively stable over the past several years. Across all transfer types, the largest entry points are at the sophomore and junior level.

Figure 4: *UNC Transfer Student Entering Class Level, Fall 2013*



Source: UNC-GA IRA/CCD.ZE002

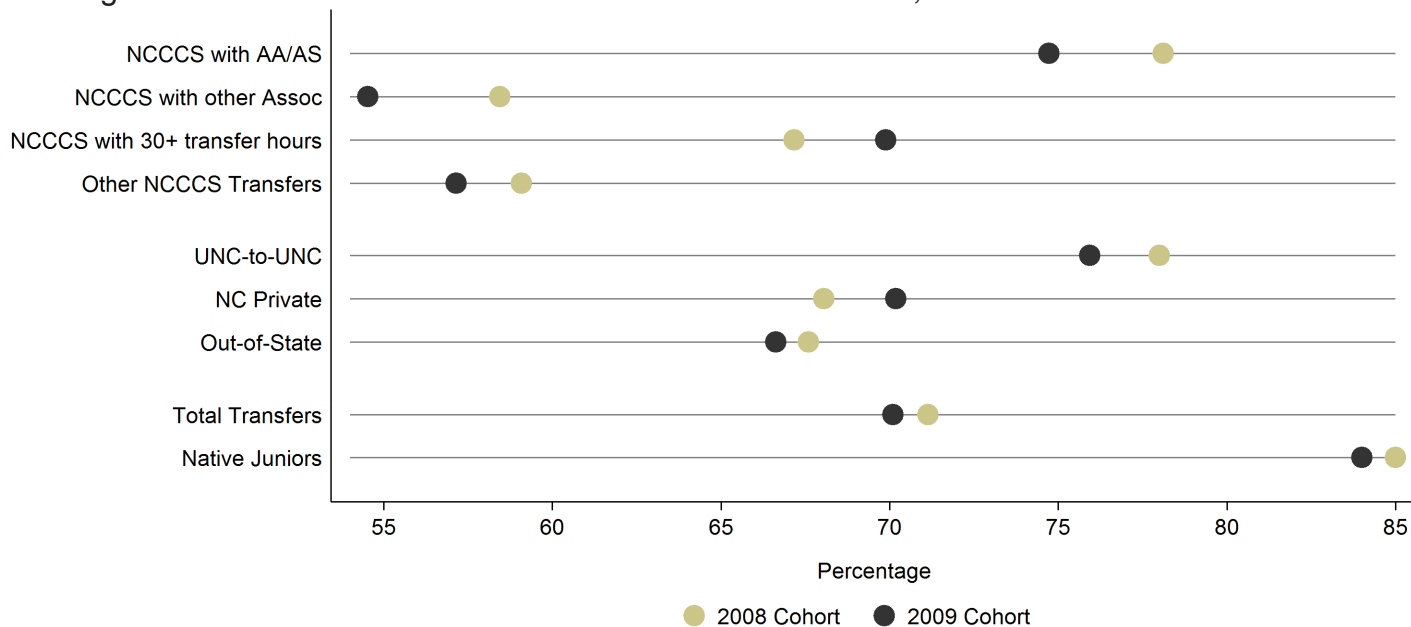
⁵ Accompanying data is found in Appendix E.

Graduation & Progress Rates

UNC-GA tracks the graduation rates of all transfer students who enroll at a UNC institution.⁶ One measure of particular importance is the four-year graduation rate of transfer students who enter the UNC system as juniors. To create a comparable group, we benchmark these students against the four-year graduation rate for first-time freshmen who continued to their junior year at a UNC institution (native juniors).

Figure 5 shows that the four-year graduation rates for students transferring as juniors in the fall 2008 and 2009 entering cohorts are 71% and 70%, respectively. These graduation rates include full-time and part-time students. For the fall 2009 cohort, UNC-to-UNC transfers and students transferring from NCCCS with an AA or AS degree graduated at the highest rates at 76% and 75%. NCCCS transfer students without a degree and with few articulating hours had the lowest graduation rate at 57%. The four-year graduation rate for native juniors is 84%, 14% points higher than the 2009 transfer student cohort's graduation rate.

Figure 5: *UNC Transfer Student Graduation Rates - Juniors, 2008 & 2009 Cohorts*



Source: UNC-GA IRA/CCD.ZE002

6 Graduation data is found in Appendix F for all transfer class levels: freshmen (six-year), sophomores (five-year), juniors (four-year), and seniors (three-year).

Transfer Student Declared Majors

Studies find that early declaration of a major leads to timely graduation, and indeed this proves true for UNC transfer students.⁷ For transfer students that entered the UNC system in 2009, the four-year graduation rate for entering juniors who declared a major upon entry was 72%, compared to 64% for those entering undeclared.

In the 2013 cohort, 73% of students declared a major upon entry, a 6% increase from 2008. Among all transfer students declaring a major, 40% selected a major in one of three fields.

The top three fields for declared majors of transfer students are:

- Business (16%)
- Health Professions (15%)
- Education (10%)

Major selection, however, does vary across transfer type. Table 1 shows the majors of entering transfer students by percentage. Note for example, that the NCCCS: Other Associate is heavily concentrated in the Health Professions, reflecting the large numbers of Associate of Applied Science (AAS) recipients who enroll in UNC's RN-to-BSN (Bachelor's of Science in Nursing) programs.

7 For example, see "Get With the Program: Accelerating Community College Students' Entry into and Completion of Programs of Study" by Davis Jenkins and Sung-Woo Cho, Community College Research Center, Teachers College, Columbia University.

Table 1: *Transfer Students Declared Majors (Percentage), 2013 Cohort*
(Darker Shades Indicate Higher Values)⁸

Major	NCCCS: AA/AS	NCCCS: Other Assoc.	NCCCS: 30+ hrs.	NCCCS: Other	UNC-to- UNC	NC Private	Out-of- State
Agriculture	1.3	0.1	1.5	0.3	1.8	1.7	1.2
Natural Resources & Conservation	1.2	0.5	1.3	1.0	0.9	1.1	1.3
Architecture	0.0	0.1	0.1	0.2	0.1	0.1	0.1
Cultural & Gender Studies	0.3	0.0	0.2	0.2	0.6	0.2	0.4
Communication & Journalism*	4.9	1.4	3.8	4.5	3.7	4.1	3.7
Computer and Information Sciences	4.2	3.8	3.6	3.5	3.6	2.8	3.4
Education*	11.1	11.9	10.6	10.9	7.1	8.4	7.9
Engineering	4.9	1.8	5.1	2.0	5.9	5.8	4.2
Engineering Tech. & Related Fields	1.4	10.8	2.6	2.2	1.5	0.7	1.7
Foreign Language & Literature	0.7	0.2	0.5	0.7	0.6	0.1	0.7
Family & Consumer Sciences	0.5	1.4	0.6	0.7	1.3	0.5	0.9
English Language & Literatures*	2.9	0.2	1.4	0.8	1.8	0.9	1.5
Liberal Arts & Humanities	1.4	0.3	1.1	0.5	2.0	1.5	1.7
Biology*	6.1	1.5	4.0	6.4	6.7	7.2	6.7
Mathematics & Statistics	1.1	0.1	0.8	0.8	1.4	0.7	1.3
Multi/Interdisciplinary Studies	0.8	0.6	1.3	0.8	1.0	0.7	1.7
Leisure Studies	4.3	0.7	4.0	9.0	5.4	7.4	4.0
Philosophy & Religious Studies	0.6	0.1	0.1	0.3	0.2	0.7	0.3
Physical Sciences	2.8	0.7	2.6	2.2	3.7	1.9	3.1
Science Technologies	0.0	0.0	0.0	0.0	0.0	0.2	0.0
Psychology*	7.5	1.8	5.4	5.4	5.5	6.3	5.4
Protective Services	2.1	8.9	3.8	6.2	2.6	5.0	3.4
Public Administration	4.3	4.8	3.3	2.7	2.8	2.1	2.6
Social Sciences*	6.5	1.9	4.3	4.5	5.2	6.5	6.7
Transportation & Materials Moving	0.0	0.0	0.0	0.0	0.1	0.0	0.0
Visual & Performing Arts	2.8	3.2	3.1	4.7	3.4	2.5	4.9
Health Professions	6.1	30.9	16.3	15.6	14.3	14.5	14.9
Business*	17.9	11.9	17.0	13.1	16.2	14.4	15.6
History*	2.4	0.2	1.4	0.8	0.9	1.8	0.8
Percent Total by Transfer Type	100%	100%	100%	100%	100%	100%	100%

Source: UNC-GA IRA/CCD.ZE002

8 The asterisk (*) denotes that CAA Baccalaureate Degree Plans were developed around these majors.

Other Transfer Initiatives Within UNC

Comprehensive Articulation Agreement

Originally implemented in 1997 following a legislative mandate, the North Carolina Comprehensive Articulation Agreement (CAA) is a statewide agreement governing the transfer of credits between NCCCS and UNC institutions with the objective of smoothing the process of cross-sector transfer. In February 2014, the CAA was updated, amended, and refined to improve transfer for this increasingly important sub-population. The newly amended CAA requires the creation of Baccalaureate Degree Plans which allow the maximization of credit transfer across sectors. Development of these plans are currently underway. Additionally, UNC-GA is refining its website to include key information for prospective transfer students.

Reverse Transfer

The Credit Where It's Due Initiative is a collaboration between the UNC and NCCCS systems. Supported by USA Funds, officials at the two systems have developed a process to award associates degrees to students that fulfill community college requirements while pursuing their baccalaureate degree at a UNC institution (also known as reverse transfer). UNC-GA is currently exploring the possibility for scaling this project beyond the 8 universities and 15 community colleges in the Pilot.

Lateral Agreements and Partnerships

As of this writing the North Carolina Legislature is considering a study that would require UNC-GA and NCCCS to jointly study cross-sector agreements and partnerships that exist among their constituent institutions. UNC-GA and the NCCCS have long been aware of these relationships - which frequently occur at the between programs - yet an understanding of their relationship to degree completion is unknown. In anticipation of this request, UNC-GA has begun work on this study so that we may use this opportunity to identify and then scale successful strategies across the state and system.

Appendix A - Definitions of Terms

The following definitions are only for the purpose of this report:

- **Transfer student:** an undergraduate student entering a UNC institution for the first time but known to have previously attended a postsecondary institution as an undergraduate.
- **NCCCS transfers:** transfer students who attended one of the 58 NCCCS community colleges before entering a UNC institution.
- **NCCCS transfers with AA/AS:** NCCCS transfers who were awarded an Associate in Arts (AA) or an Associate in Science (AS) degree before entering a UNC institution.
- **NCCCS transfers with Other Associate Degree:** NCCCS transfers who were awarded with an associate degree other than an AA or AS (e.g., Associate in Applied Science (AAS), Associate in Fine Arts (AFA), or Associate in General Education (AGE)) before entering a UNC institution. These degrees are not part of the Comprehensive Articulation Agreement (CAA) developed and implemented between the NCCCS and the University of North Carolina (UNC).
- **NCCCS transfers with 30 or more transfer hours:** NCCCS transfers who do not have an associate degree, but have 30 or more transferable hours when entering a UNC institution.
- **Other NCCCS transfers:** NCCCS transfers who do not have an associate degree but have fewer than 30 credit hours when entering a UNC institution.
- **UNC-to-UNC transfers:** transfer students who last attended one of the 16 UNC institutions before entering another UNC institution.
- **NC private transfers:** transfer students who last attended one of the North Carolina private institutions before entering a UNC institution.
- **Out-of-state transfers:** transfer students who last attended an institution outside of North Carolina before entering a UNC institution.
- **Class level:** upon admission, class level is evaluated and decided by UNC institutions based on course work, credit hours, GPA, and selected fields.
- **UNC native juniors:** students that enrolled as first-time undergraduates at UNC and are first-time juniors at the start of the semester indicated in the tables.
- **Reverse Transfer:** a student's course credit is sent back to the community college for the purpose of evaluation for an associate degree while enrolled at a UNC institution.
- **CAA Baccalaureate Degree Plan:** Each UNC institution will develop, publish, and maintain four-year degree plans identifying community college courses that provide pathways leading to associate degree completion, admission into the major, and baccalaureate completion.

Appendix B - UNC Transfer Student Enrollment Trends, Fall 2003 - Fall 2013

Transfer Type	2003	2004	2005	2006	2007	2008	2009	2010	2011	2012	2013
All NCCCS	5,365	5,803	5,940	5,931	6,190	6,353	6,677	7,122	7,136	7,905	8,383
NCCCS with AA/AS	-	-	-	-	-	1,679	1,982	2,064	2,205	2,517	2,667
NCCCS with other Associate	-	-	-	-	-	833	890	1,039	952	1,076	1,209
NCCCS with 30+ transfer hours	-	-	-	-	-	2,924	2,880	3,118	3,192	3,452	3,617
Other NCCCS Transfers	-	-	-	-	-	917	925	901	787	860	890
UNC-to-UNC	2,114	2,134	2,305	2,293	2,192	2,188	2,198	2,338	2,182	2,278	2,233
NC Private	898	898	1,089	1,105	1,181	1,065	1,079	1,062	1,047	1,172	1,152
Out-of-State	2,782	2,789	3,006	3,383	3,335	3,418	3,595	3,532	3,356	3,394	3,186
TOTAL Transfers	11,159	11,624	12,340	12,712	12,898	13,024	13,549	14,054	13,721	14,749	14,954

Source: UNC-GA IRA/CCD.ZE002

Note: Beginning this year, the method of exchanging data across the community college and university sectors changed. This provides UNC-GA with rich, student level detail though it currently precludes UNC-GA from reporting on NCCCS sub-categories before 2008.

Appendix C - UNC Transfer Student Enrollment by Campus, Fall 2013

Campus	All NCCCS	UNC-to-UNC	NC Private	Out-of-State	TOTAL
ASU	866	188	98	176	1,328
ECSU	93	14	9	36	152
ECU	949	155	50	174	1,328
FSU	387	77	72	344	880
NCA&T	176	86	50	118	430
NCCU	289	79	43	84	495
NCSU	594	288	123	210	1,215
UNCA	224	46	20	88	378
UNCC	1,506	400	230	510	2,646
UNC-CH	298	189	47	342	876
UNCG	863	267	131	262	1,523
UNCP	292	53	46	105	496
UNCSA	9	8	1	31	49
UNCW	995	189	101	402	1,687
WCU	571	54	44	182	851
WSSU	271	140	87	122	620
TOTAL	8,383	2,233	1,152	3,186	14,954

Source: UNC-GA IRA/CCD.ZE002

Appendix D - Campus Transfer Student Enrollment Trends, Fall 2003 - Fall 2013

Appalachian State University

Transfer Type	2003	2004	2005	2006	2007	2008	2009	2010	2011	2012	2013
All NCCCS	394	489	482	475	538	583	592	548	536	680	866
NCCCS with AA/AS	-	-	-	-	-	165	189	177	193	255	248
NCCCS with other Associate	-	-	-	-	-	44	34	46	19	52	88
NCCCS with 30+ transfer hours	-	-	-	-	-	323	318	293	291	340	470
Other NCCCS Transfers	-	-	-	-	-	51	51	32	33	33	60
UNC-to-UNC	112	127	117	132	157	173	169	197	179	187	188
NC Private	72	63	66	68	81	105	97	90	79	98	98
Out-of-State	163	156	148	177	167	165	173	192	197	188	176
TOTAL Transfers	741	835	813	852	943	1,026	1,031	1,027	991	1,153	1,328

Source: UNC-GA IRA/CCD.ZE002

East Carolina University

Transfer Type	2003	2004	2005	2006	2007	2008	2009	2010	2011	2012	2013
All NCCCS	770	838	822	781	930	965	867	735	879	985	949
NCCCS with AA/AS	-	-	-	-	-	242	257	290	319	354	335
NCCCS with other Associate	-	-	-	-	-	172	156	109	132	133	139
NCCCS with 30+ transfer hours	-	-	-	-	-	438	407	313	402	474	453
Other NCCCS Transfers	-	-	-	-	-	113	47	23	26	24	22
UNC-to-UNC	176	191	220	252	231	221	184	170	163	163	155
NC Private	91	105	108	160	140	122	102	77	81	52	50
Out-of-State	237	227	259	388	367	359	262	217	235	226	174
TOTAL Transfers	1,274	1,361	1,409	1,581	1,668	1,667	1,415	1,199	1,358	1,426	1,328

Source: UNC-GA IRA/CCD.ZE002

Elizabeth City State University

Transfer Type	2003	2004	2005	2006	2007	2008	2009	2010	2011	2012	2013
All NCCCS	76	107	85	89	88	64	94	83	73	88	93
NCCCS with AA/AS	-	-	-	-	-	10	12	15	22	20	23
NCCCS with other Associate	-	-	-	-	-	7	11	10	7	17	12
NCCCS with 30+ transfer hours	-	-	-	-	-	12	12	24	13	23	22
Other NCCCS Transfers	-	-	-	-	-	35	59	34	31	28	36
UNC-to-UNC	23	19	25	18	20	23	18	19	25	16	14
NC Private	13	29	11	17	20	21	26	27	16	18	9
Out-of-State	51	57	48	65	55	75	67	75	62	79	36
TOTAL Transfers	163	212	169	189	183	183	205	204	176	201	152

Source: UNC-GA IRA/CCD.ZE002

Fayetteville State University

Transfer Type	2003	2004	2005	2006	2007	2008	2009	2010	2011	2012	2013
All NCCCS	207	208	306	253	334	275	281	307	334	312	387
NCCCS with AA/AS	-	-	-	-	-	36	34	47	44	57	48
NCCCS with other Associate	-	-	-	-	-	82	93	97	102	90	105
NCCCS with 30+ transfer hours	-	-	-	-	-	120	124	144	134	117	180
Other NCCCS Transfers	-	-	-	-	-	37	30	19	54	48	54
UNC-to-UNC	61	40	105	76	87	49	63	46	45	76	77
NC Private	41	34	73	48	44	31	43	38	32	75	72
Out-of-State	132	139	215	292	243	212	212	240	259	302	344
TOTAL Transfers	441	421	699	669	708	567	599	631	670	765	880

Source: UNC-GA IRA/CCD.ZE002

North Carolina A&T State University

Transfer Type	2003	2004	2005	2006	2007	2008	2009	2010	2011	2012	2013
All NCCCS	194	182	191	193	106	113	144	178	211	168	176
NCCCS with AA/AS	-	-	-	-	-	6	15	24	33	24	31
NCCCS with other Associate	-	-	-	-	-	23	24	28	36	29	33
NCCCS with 30+ transfer hours	-	-	-	-	-	41	38	70	88	75	71
Other NCCCS Transfers	-	-	-	-	-	43	67	56	54	40	41
UNC-to-UNC	83	75	88	87	49	48	81	87	99	69	86
NC Private	49	54	49	63	32	28	37	38	49	59	50
Out-of-State	167	154	176	201	129	76	105	116	116	114	118
TOTAL Transfers	493	465	504	544	316	265	367	419	475	410	430

Source: UNC-GA IRA/CCD.ZE002

North Carolina Central University

Transfer Type	2003	2004	2005	2006	2007	2008	2009	2010	2011	2012	2013
All NCCCS	153	160	159	117	108	140	180	187	207	208	289
NCCCS with AA/AS	-	-	-	-	-	20	25	25	40	56	60
NCCCS with other Associate	-	-	-	-	-	21	28	36	41	33	48
NCCCS with 30+ transfer hours	-	-	-	-	-	62	64	90	70	59	87
Other NCCCS Transfers	-	-	-	-	-	37	63	36	56	60	94
UNC-to-UNC	69	74	83	61	36	53	75	109	82	102	79
NC Private	46	39	42	32	25	31	48	45	43	43	43
Out-of-State	105	102	99	117	89	84	129	106	114	124	84
TOTAL Transfers	373	375	383	327	258	308	432	447	446	477	495

Source: UNC-GA IRA/CCD.ZE002

North Carolina State University

Transfer Type	2003	2004	2005	2006	2007	2008	2009	2010	2011	2012	2013
All NCCCS	463	422	387	419	425	444	499	545	456	617	594
NCCCS with AA/AS	-	-	-	-	-	120	172	179	164	239	234
NCCCS with other Associate	-	-	-	-	-	15	14	14	14	26	13
NCCCS with 30+ transfer hours	-	-	-	-	-	287	300	336	267	339	334
Other NCCCS Transfers	-	-	-	-	-	22	13	16	11	13	13
UNC-to-UNC	409	434	332	353	276	324	267	263	278	288	288
NC Private	76	73	186	176	188	151	80	97	71	79	123
Out-of-State	141	137	156	160	173	174	251	236	222	225	210
TOTAL Transfers	1,089	1,066	1,061	1,108	1,062	1,093	1,097	1,141	1,027	1,209	1,215

Source: UNC-GA IRA/CCD.ZE002

University of North Carolina Asheville

Transfer Type	2003	2004	2005	2006	2007	2008	2009	2010	2011	2012	2013
All NCCCS	113	110	138	147	140	156	157	190	183	184	224
NCCCS with AA/AS	-	-	-	-	-	65	74	76	90	82	104
NCCCS with other Associate	-	-	-	-	-	5	6	12	7	14	11
NCCCS with 30+ transfer hours	-	-	-	-	-	74	63	81	72	67	88
Other NCCCS Transfers	-	-	-	-	-	12	14	21	14	21	21
UNC-to-UNC	50	31	37	46	39	40	50	45	48	45	46
NC Private	31	18	16	23	23	20	27	28	23	24	20
Out-of-State	110	68	97	89	85	81	84	96	76	72	88
TOTAL Transfers	304	227	288	305	287	297	318	359	330	325	378

Source: UNC-GA IRA/CCD.ZE002

University of North Carolina-Chapel Hill

Transfer Type	2003	2004	2005	2006	2007	2008	2009	2010	2011	2012	2013
All NCCCS	180	208	171	205	210	197	238	234	235	263	298
NCCCS with AA/AS	-	-	-	-	-	112	129	110	125	154	173
NCCCS with other Associate	-	-	-	-	-	12	12	7	7	4	10
NCCCS with 30+ transfer hours	-	-	-	-	-	64	83	98	97	101	107
Other NCCCS Transfers	-	-	-	-	-	9	14	19	6	4	8
UNC-to-UNC	216	233	249	261	232	220	184	233	175	182	189
NC Private	61	43	56	46	49	55	44	59	49	44	47
Out-of-State	372	344	351	366	302	311	312	396	332	356	342
TOTAL Transfers	829	828	827	878	793	783	778	922	791	845	876

Source: UNC-GA IRA/CCD.ZE002

University of North Carolina Charlotte

Transfer Type	2003	2004	2005	2006	2007	2008	2009	2010	2011	2012	2013
All NCCCS	871	878	944	892	895	990	1,068	1,212	1,236	1,362	1,506
NCCCS with AA/AS	-	-	-	-	-	244	332	339	328	382	461
NCCCS with other Associate	-	-	-	-	-	114	110	143	121	127	174
NCCCS with 30+ transfer hours	-	-	-	-	-	450	445	518	583	646	623
Other NCCCS Transfers	-	-	-	-	-	182	181	212	204	207	248
UNC-to-UNC	290	317	348	309	324	295	348	348	332	397	400
NC Private	133	135	148	135	144	142	158	182	199	241	230
Out-of-State	480	479	479	570	670	730	766	725	640	568	510
TOTAL Transfers	1,774	1,809	1,919	1,906	2,033	2,157	2,340	2,467	2,407	2,568	2,646

Source: UNC-GA IRA/CCD.ZE002

University of North Carolina Greensboro

Transfer Type	2003	2004	2005	2006	2007	2008	2009	2010	2011	2012	2013
All NCCCS	467	513	537	702	675	746	764	843	848	957	863
NCCCS with AA/AS	-	-	-	-	-	173	191	227	252	258	246
NCCCS with other Associate	-	-	-	-	-	122	104	140	133	175	164
NCCCS with 30+ transfer hours	-	-	-	-	-	333	336	350	361	415	388
Other NCCCS Transfers	-	-	-	-	-	118	133	126	102	109	65
UNC-to-UNC	237	202	354	287	313	307	333	327	311	297	267
NC Private	117	85	120	117	134	122	139	121	111	173	131
Out-of-State	204	218	228	301	316	320	305	320	251	271	262
TOTAL Transfers	1,025	1,018	1,239	1,407	1,438	1,495	1,541	1,611	1,521	1,698	1,523

Source: UNC-GA IRA/CCD.ZE002

University of North Carolina Pembroke

Transfer Type	2003	2004	2005	2006	2007	2008	2009	2010	2011	2012	2013
All NCCCS	286	318	329	314	271	313	337	353	304	279	292
NCCCS with AA/AS	-	-	-	-	-	55	78	54	66	62	67
NCCCS with other Associate	-	-	-	-	-	59	101	89	81	95	86
NCCCS with 30+ transfer hours	-	-	-	-	-	128	110	139	109	88	100
Other NCCCS Transfers	-	-	-	-	-	71	48	71	48	34	39
UNC-to-UNC	57	63	47	70	54	57	51	76	52	42	53
NC Private	36	36	38	45	99	41	40	43	38	56	46
Out-of-State	70	85	83	95	53	140	150	115	105	113	105
TOTAL Transfers	449	502	497	524	477	551	578	587	499	490	496

Source: UNC-GA IRA/CCD.ZE002

University of North Carolina Wilmington

Transfer Type	2003	2004	2005	2006	2007	2008	2009	2010	2011	2012	2013
All NCCCS	711	764	768	800	813	733	787	831	907	1,013	995
NCCCS with AA/AS	-	-	-	-	-	321	363	361	398	434	437
NCCCS with other Associate	-	-	-	-	-	19	36	51	64	60	68
NCCCS with 30+ transfer hours	-	-	-	-	-	340	339	355	396	415	411
Other NCCCS Transfers	-	-	-	-	-	53	49	64	49	104	79
UNC-to-UNC	193	166	161	190	157	197	190	199	190	206	189
NC Private	61	73	82	69	64	57	61	64	84	80	101
Out-of-State	250	281	275	339	260	292	316	319	341	435	402
TOTAL Transfers	1,215	1,284	1,286	1,398	1,294	1,279	1,354	1,413	1,522	1,734	1,687

Source: UNC-GA IRA/CCD.ZE002

University of North Carolina School of the Arts

Transfer Type	2003	2004	2005	2006	2007	2008	2009	2010	2011	2012	2013
All NCCCS	11	6	12	6	11	10	5	13	10	9	9
NCCCS with AA/AS	-	-	-	-	-	3	-	2	1	1	1
NCCCS with other Associate	-	-	-	-	-	-	-	-	2	1	1
NCCCS with 30+ transfer hours	-	-	-	-	-	-	-	-	-	1	1
Other NCCCS Transfers	-	-	-	-	-	7	5	11	7	6	6
UNC-to-UNC	13	9	8	8	15	11	11	12	12	5	8
NC Private	1	3	1	4	2	5	1	4	9	4	1
Out-of-State	31	41	45	36	29	28	35	37	32	28	31
TOTAL Transfers	56	59	66	54	57	54	52	66	63	46	49

Source: UNC-GA IRA/CCD.ZE002

Western Carolina University

Transfer Type	2003	2004	2005	2006	2007	2008	2009	2010	2011	2012	2013
All NCCCS	307	358	360	401	408	370	378	492	455	508	571
NCCCS with AA/AS	-	-	-	-	-	92	91	118	102	113	174
NCCCS with other Associate	-	-	-	-	-	75	86	118	114	115	147
NCCCS with 30+ transfer hours	-	-	-	-	-	145	150	163	184	191	177
Other NCCCS Transfers	-	-	-	-	-	58	51	93	55	89	73
UNC-to-UNC	59	54	60	60	60	62	54	75	52	74	54
NC Private	32	33	43	42	44	67	71	53	69	69	44
Out-of-State	200	209	265	91	262	243	270	172	208	145	182
TOTAL Transfers	598	654	728	594	774	742	773	792	784	796	851

Source: UNC-GA IRA/CCD.ZE002

Winston-Salem State University

Transfer Type	2003	2004	2005	2006	2007	2008	2009	2010	2011	2012	2013
All NCCCS	162	242	249	137	238	254	286	371	262	272	271
NCCCS with AA/AS	-	-	-	-	-	15	20	20	28	26	25
NCCCS with other Associate	-	-	-	-	-	63	75	139	72	105	110
NCCCS with 30+ transfer hours	-	-	-	-	-	107	91	144	125	101	105
Other NCCCS Transfers	-	-	-	-	-	69	100	68	37	40	31
UNC-to-UNC	66	99	71	83	142	108	120	132	139	129	140
NC Private	38	75	50	60	92	67	105	96	94	57	87
Out-of-State	69	92	82	96	135	128	158	170	166	148	122
TOTAL Transfers	335	508	452	376	607	557	669	769	661	606	620

Source: UNC-GA IRA/CCD.ZE002

Appendix E - UNC Transfer Student Entering Class Level, Fall 2013

Transfer Type	Freshman	Sophomore	Junior	Senior	Total	N
All NCCCS	11%	35%	47%	7%	100%	8,383
NCCCS with AA/AS	1%	9%	86%	5%	100%	2,667
NCCCS with other Associate	6%	28%	47%	18%	100%	1,209
NCCCS with 30+ transfer hours	1%	63%	30%	6%	100%	3,617
Other NCCCS Transfers	90%	7%	0%	2%	100%	890
UNC-to-UNC	17%	44%	21%	18%	100%	2,233
NC Private	23%	45%	21%	11%	100%	1,152
Out-of-State	19%	39%	27%	15%	100%	3,186
TOTAL Transfers by Entry Class	14%	38%	37%	11%	100%	14,954

Appendix F - Transfer Student Graduation Rates

UNC Freshmen Transfer Student Six-Year Graduation Rates

Transfer Type	2003		2004		2005		2006		2007	
	N	%	N	%	N	%	N	%	N	%
All NCCCS	1,071	44	957	45	1,257	48	989	49	970	47
NCCCS with AA/AS	-	-	-	-	-	-	-	-	-	-
NCCCS with other Associate	-	-	-	-	-	-	-	-	-	-
NCCCS with 30+ transfer hours	-	-	-	-	-	-	-	-	-	-
Other NCCCS Transfers	-	-	-	-	-	-	-	-	-	-
UNC-to-UNC	455	51	425	61	555	53	535	62	490	60
NC Private	234	55	243	44	361	45	321	45	309	44
Out-of-State	648	48	610	50	817	49	816	49	677	47
TOTAL Transfers	2,408	48	2,235	49	2,990	49	2,661	51	2,446	49

Source: UNC-GA IRA/CCD.ZE002

UNC Sophomore Transfer Student Five-Year Graduation Rates

Transfer Type	2003		2004		2005		2006		2007	
	N	%	N	%	N	%	N	%	N	%
All NCCCS	2,355	63	2,161	64	2,291	63	2,418	65	2,310	63
NCCCS with AA/AS									221	70
NCCCS with other Associate									231	53
NCCCS with 30+ transfer hours									1,775	63
Other NCCCS Transfers									83	76
UNC-to-UNC	913	74	932	74	961	71	925	75	967	71
NC Private	389	65	400	66	443	64	475	64	430	64
Out-of-State	1,039	62	1,054	62	1,286	63	1,251	63	1,233	62
TOTAL Transfers	4,696	65	4,547	66	4,981	64	5,069	66	4,940	65

Source: UNC-GA IRA/CCD.ZE002

UNC Transfer and Native Junior Student Four-Year Graduation Rates

Transfer Type	2003		2004		2005		2006		2007	
	N	%	N	%	N	%	N	%	N	%
All NCCCS	2,329	67	2,423	69	2,474	69	2,720	71	2,980	70
NCCCS with AA/AS							1,366	78	1,626	75
NCCCS with other Associate							397	58	409	55
NCCCS with 30+ transfer hours							935	67	910	70
Other NCCCS Transfers							22	59	35	57
UNC-to-UNC	584	75	564	73	537	76	491	78	511	76
NC Private	215	72	225	66	250	67	216	68	218	70
Out-of-State	821	68	901	69	944	67	901	68	1,007	67
TOTAL Transfers	3,949	69	4,113	69	4,205	70	4,328	71	4,716	70

Source: UNC-GA IRA/CCD.ZE002

UNC Senior Transfer Student Three-Year Graduation Rates

Transfer Type	2003		2004		2005		2006		2007	
	N	%	N	%	N	%	N	%	N	%
All NCCCS	228	54	328	55	411	60	425	63	521	63
NCCCS with AA/AS					64	66	86	79	114	69
NCCCS with other Associate					133	63	118	64	157	75
NCCCS with 30+ transfer hours					189	57	190	60	221	56
Other NCCCS Transfers					25	44	31	39	29	34
UNC-to-UNC	233	50	240	50	275	54	338	49	364	48
NC Private	116	44	147	52	117	47	158	39	143	44
Out-of-State	380	43	463	54	458	47	512	45	537	45
TOTAL Transfers	957	47	1,178	53	1,261	52	1,433	51	1,565	52

Source: UNC-GA IRA/CCD.ZE002